

Nova collection

Version 4.5

*A soft microfibre fabric
for indoor upholstery*

Nova collection

AGUA

UPHOLSTERY FABRICS



Anti-Microbial



Bleach
Cleanable



Fire Retardant
Crib 5



Stain Resistant
Protech®



Waterproof



Martindale Abrasion
Severe Contract



Phthalate
Free



REACH
Compliant

Designed for use in demanding environments, the Nova collection is a high performance fabric that provides comfort and luxury.

Perfect for
cruise ships
hotels
bars
conference
centres
healthcare
marine
spas

Use for
seating
bed bases
headboards

Nova



Lemon



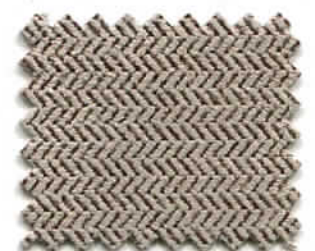
Vanilla



Oatmeal



Latte



Taupe

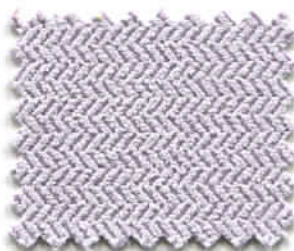




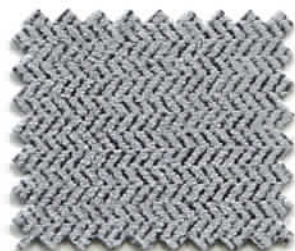
Saffron



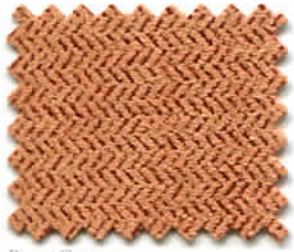
Dill



Lavender



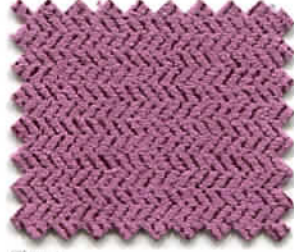
Dove



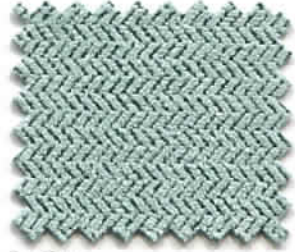
Burnt Orange



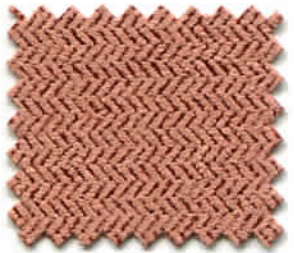
Fennel



Claret



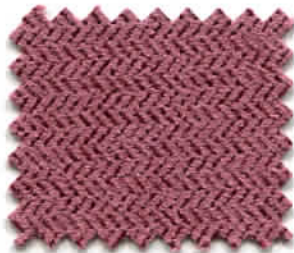
Sea Grass



Chestnut



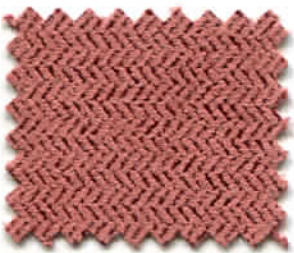
Sage



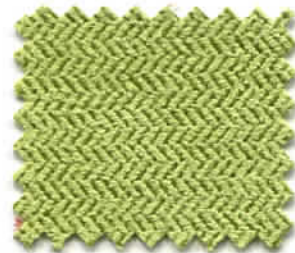
Burgundy



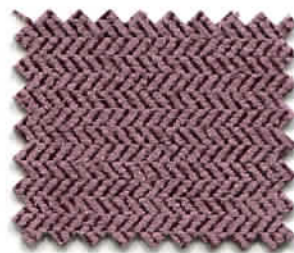
Wedgwood



Russet



Lime



Damson



Royal



Mink



Moss



Grape



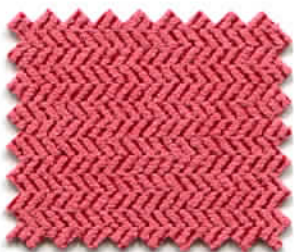
Orion



Walnut



Raven



Poppy



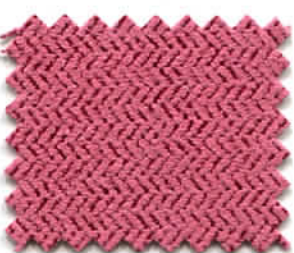
Bluebell



Nutmeg



Ebony



Raspberry

For further information
and samples contact
Agua Fabrics

T +44 (0)20 8205 0050
F +44 (0)20 8205 0660
E samples@aguafabrics.com

www.aguafabrics.com

Fabric Specifications

<i>Flame retardant</i>	BS7176 Crib 5, IMO Annex I Part 8, Cal 117, M2
<i>Anti-bacterial/ Anti-fungal</i>	Will not support microbial or fungal growth including Salmonella, E Coli and MRSA
<i>Waterproof</i>	Hydrostatic Head BS3424 > 1 metre
<i>Breathable</i>	Moisture vapour permeable
<i>Martindale abrasion</i>	Severe contract grade > 100,000
<i>Tear strength</i>	BS4303 Severe Contract Grade
<i>Breaking strength</i>	BS2576 Severe Contract Grade
<i>Urea resistance</i>	BS4324 part 19. No deterioration after 24 hours, 5.5ph, 8.8ph Urea soak
<i>Stain resistant</i>	Excellent stain removal has been observed for grease, ink, blood, urine, coffee, iodine, betadine, ketchup, chewing gum, chocolate, grape juice
<i>Composition</i>	100% treated polyester. 145cm (57") wide
<i>Making up</i>	We recommend a minimum of 32 stitches per 10 cm (8 stitches per inch) and seams must have a minimum 12mm (0.5") bite on the fabric.

Nova can be colour co-ordinated with other Agua collections to produce dual textured finishes. Please note that all fabric offered is subject to minor tolerance in respect of shade and other slight variations.

Technical specifications may be amended, please check for the latest information.

Fabric Care

Use a vacuum cleaner or soft brush to remove dust and solid particles

Always try cleaning products on a hidden piece of fabric to test suitability

Wipe frequently with a damp cloth to maintain the appearance of the fabric

All spillages should be removed immediately with a clean absorbent cloth

Most stains can be removed using cold/warm water and a clean microfibre cloth, however poorly fixed clothing dyes may cause permanent staining

Stains from products containing oil and grease should be treated with a spirit based solution

If soap based cleaners are used, all soap residues must be rinsed from the fabric

Can be cleaned with mild Hypochlorite solutions (10,000 ppm of available chlorine) or Mineral Spirit

Can be steam cleaned in situ, with steam extraction cleaner

Do not Dry Clean

Machine wash with extreme care



Remove all stains immediately before they set

Please refer to the Care Sheet on the Agua website for further details



Certificate No. FS 531220

AGUA

UPHOLSTERY FABRICS

Agua Fabrics Ltd.
Hyde House, The Hyde
London NW9 6LH

T+44 (0)20 8205 0050
F+44 (0)20 8205 0660
E info@aguafabrics.com

www.aguafabrics.com